

Light efficiency:

101 Lumen/Watt

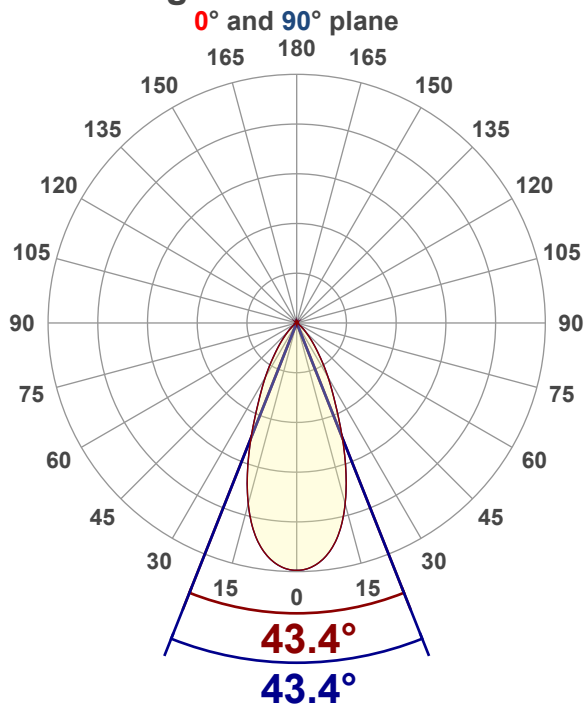
Color temperature:

3122 K

Light quality:

CRI:95.1, R_g:91.0, R_f:100.1**P: 2 / V: - / F: 2****Output: 1130 lm****Peak: 1770 cd****Power: 11.1 W****Voltage: 120 V****Current: 0.096 A****PF: 0.97****THD: 15.72 %**

Angular Distribution



Product name:

RA35-12RG-90WH - 3000K

Test Date:

12/5/2025

Beam Angle (50% of the brightness of the centre):

43.4°

Field Angle (10% of the brightness of the centre):

79°

Cut Off Angle (2.5% of the brightness of the centre):

101.3°

Beam Details

*measured at centre of beam

Mounting Height (feet)\(meter)	Lux*	Footcandles*	Beam width (feet) / (meter)
4 ft / 1.2 m	1191 lx	111 fc	3.2 ft / 1 m
8 ft / 2.4 m	298 lx	28 fc	6.4 ft / 1.9 m
12 ft / 3.7 m	132 lx	12 fc	9.5 ft / 2.9 m
16 ft / 4.9 m	74 lx	7 fc	12.7 ft / 3.9 m
20 ft / 6.1 m	48 lx	4 fc	15.9 ft / 4.8 m

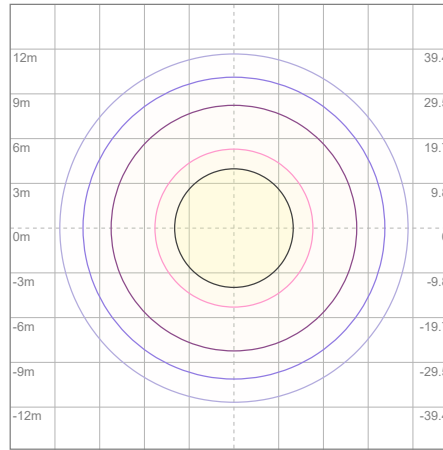
Beam center

Photometric Testing Report

Zonal Lumen Summary

Zone	Lumen	%Luminaire
0-30	840	74.34%
0-40	1019	90.18%
0-60	1115	98.67%
60-90	14.3	1.27%
70-100	5.13	0.45%
90-120	0.062	0.01%
0-90	1129	99.91%
90-180	0.539	0.05%
0-180	1130	100.00%

ISO Lux Diagram



Lux at center:	190 lx
3%	5.70 lx
5%	9.50 lx
10%	19.00 lx
30%	57.00 lx
50%	95.00 lx

Conditions:

Number of planes: 8
Lux distribution on a surface when lamp is mounted at 3.05 meters from the surface.

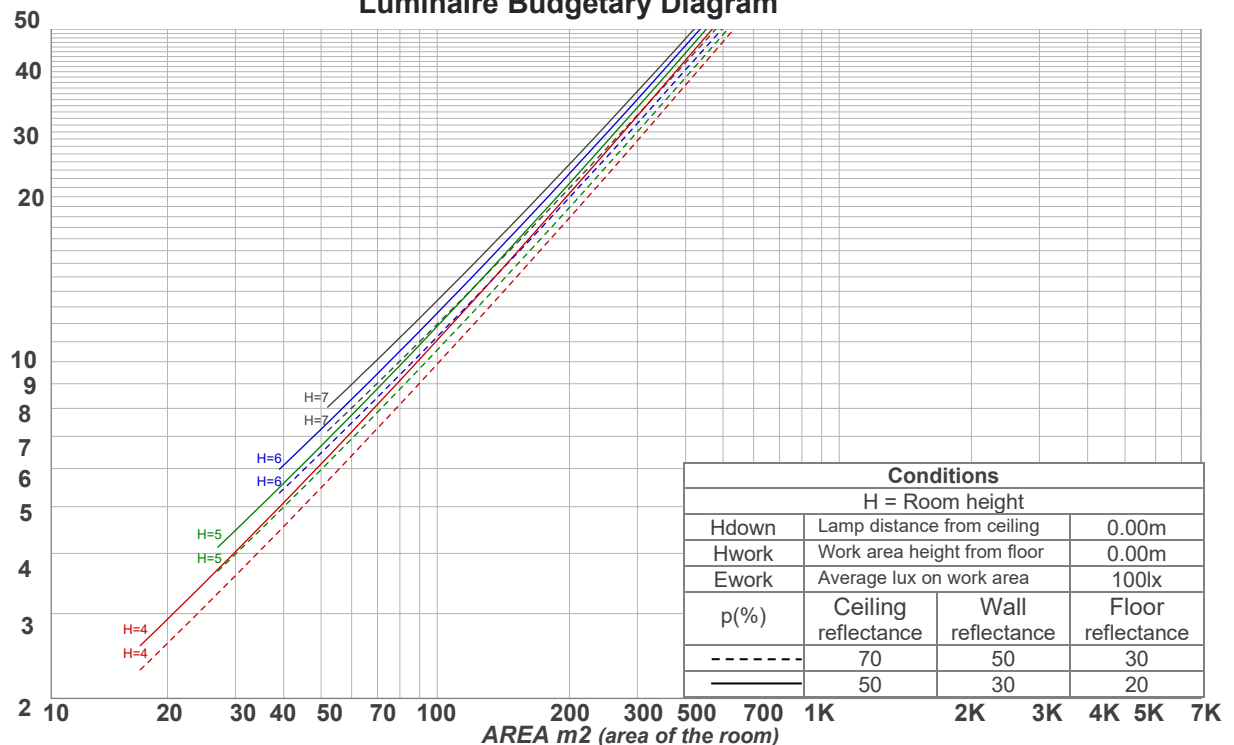
Mounting height: 3.05 meters (10 feet)

Coefficients of Utilization

Ceiling reflectance	80				70				50			30			10			0
Wall reflectance	70	50	30	10	70	50	30	10	50	30	10	50	30	10	50	30	10	0
Floor reflectance	20	20	20	20	20	20	20	20	20	20	20	20	20	20	20	20	20	0
RCR	(RCR: Room Cavity Ratio)				Room Values are expressed as percentage of Lumens delivered to the task surface													
0	119	119	119	119	116	116	116	116	111	111	111	106	106	106	102	102	102	100
1	114	111	108	106	111	109	106	105	105	103	101	101	100	98	97	96	95	94
2	108	103	99	96	106	102	98	95	98	95	93	95	93	91	93	91	89	87
3	103	97	92	88	101	95	91	87	93	89	86	90	87	84	88	85	83	82
4	98	91	85	81	96	89	85	81	87	83	80	85	82	79	84	80	78	76
5	93	85	80	75	92	84	79	75	83	78	74	81	77	74	79	76	73	72
6	89	80	75	70	87	80	74	70	78	73	70	77	72	69	75	72	69	67
7	85	76	70	66	84	75	70	66	74	69	66	73	68	65	72	68	65	64
8	81	72	66	62	80	71	66	62	70	65	62	69	65	62	68	64	61	60
9	78	68	63	59	76	68	62	59	67	62	59	66	62	58	65	61	58	57
10	74	65	59	56	73	65	59	56	64	59	56	63	59	55	62	58	55	54

LAMPS (number of lamps)

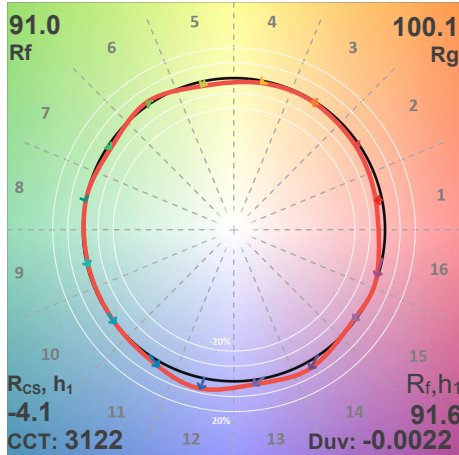
Luminaire Budgetary Diagram



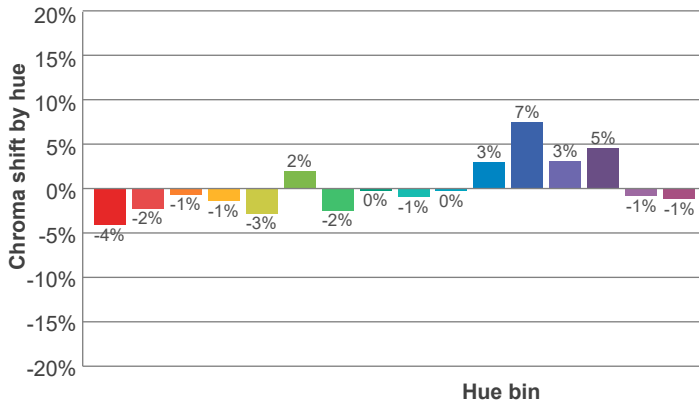
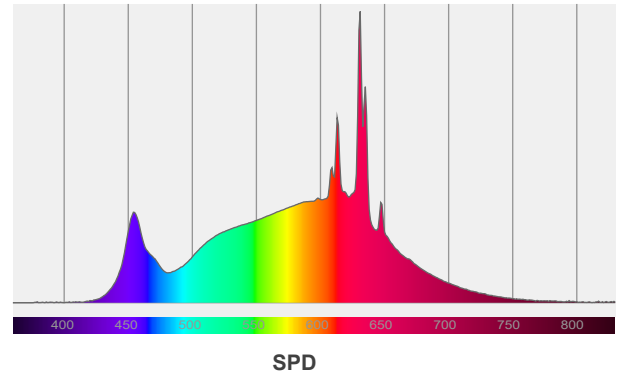
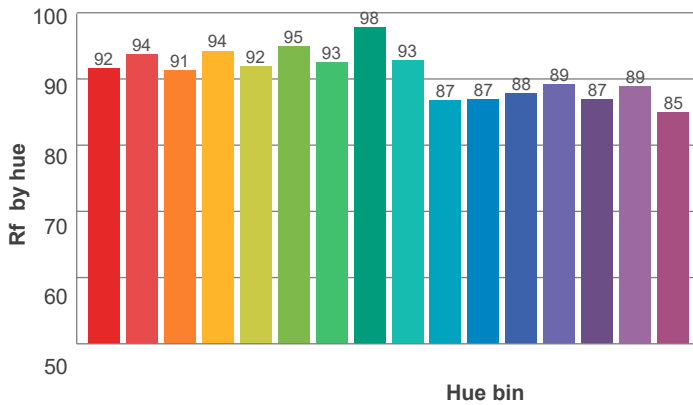
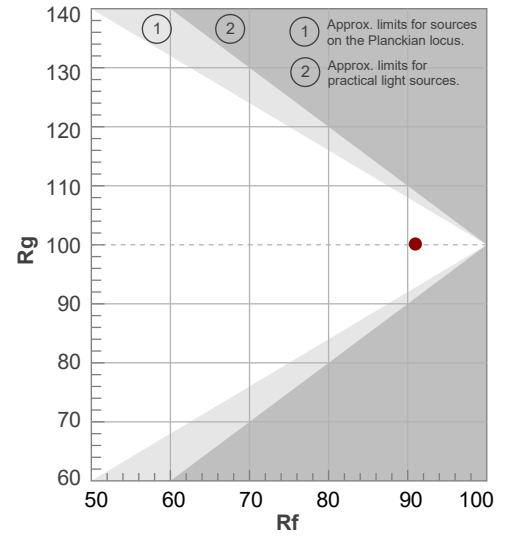
Conditions			
H = Room height			
Hdown	Lamp distance from ceiling	0.00m	
Hwork	Work area height from floor	0.00m	
Ework	Average lux on work area	100lx	
p(%)	Ceiling reflectance	Wall reflectance	Floor reflectance
-----	70	50	30
-----	50	30	20

ANSI/IES TM-30-18

P: 2 / V: - / F: 2



Hue Bin	R _f	Shifts (%)	
		Chroma	Hue
1	92	-4%	1%
2	94	-2%	2%
3	91	-1%	4%
4	94	-1%	1%
5	92	-3%	2%
6	95	2%	1%
7	93	-2%	1%
8	98	0%	0%
9	93	-1%	5%
10	87	0%	8%
11	87	3%	9%
12	88	7%	-1%
13	89	3%	-7%
14	87	5%	-9%
15	89	-1%	-6%
16	85	-1%	-12%



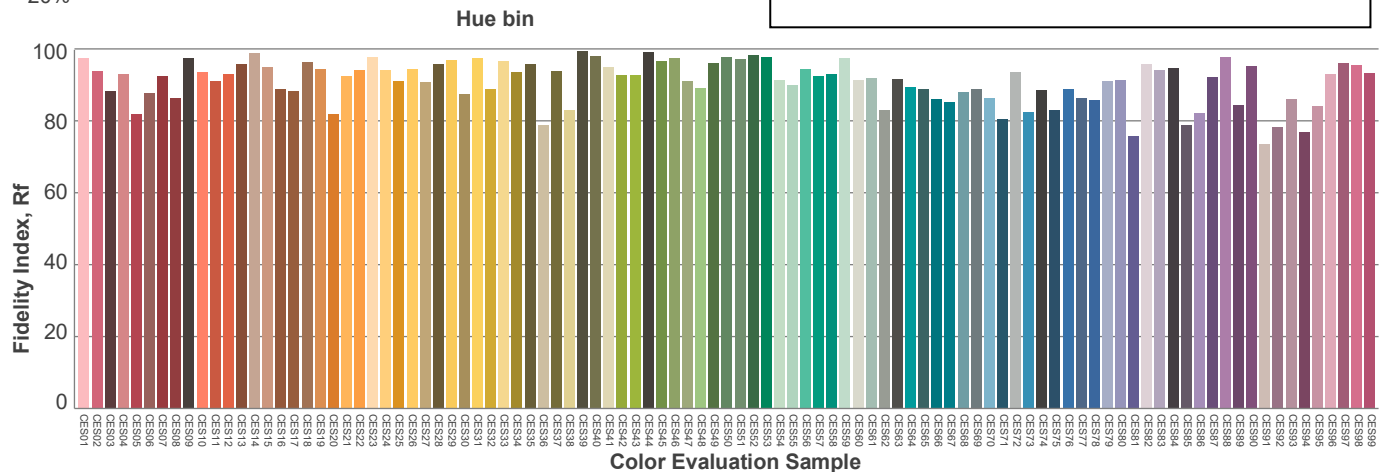
Red: 31.7%, Power=5.8mW

Blue: 11.3%, Power=7.9mW

Green: 27.2%, Power=13.9mW

UVA: 0%, Power=0.0mW

Dominant Wavelength: 584nm

1st Peak Wavelength: 631nm2nd Peak Wavelength: 613nm

Glare Evaluation According to UGR

p Ceiling		70	70	50	50	30	70	70	50	50	30
p Walls		50	30	50	30	30	50	30	50	30	30
p Floor		20	20	20	20	20	20	20	20	20	20
Room size X Y		Viewing direction at right angles to lamp axis					Viewing direction parallel to lamp axis				
2H	2H	19.9	20.5	20.0	20.7	20.9	19.9	20.5	20.0	20.7	20.9
	3H	19.7	20.5	20.1	20.7	20.8	19.7	20.5	20.1	20.7	20.8
	4H	19.7	20.4	20.1	20.6	20.9	19.7	20.4	20.1	20.6	20.9
	6H	19.7	20.3	20.0	20.6	21.0	19.7	20.3	20.0	20.6	21.0
	8H	19.7	20.2	20.0	20.6	21.0	19.7	20.2	20.0	20.6	21.0
	12H	19.6	20.2	20.0	20.5	21.0	19.6	20.2	20.0	20.5	21.0
4H	2H	19.6	20.3	20.0	20.5	20.8	19.6	20.3	20.0	20.5	20.8
	3H	19.6	20.2	20.0	20.6	21.0	19.6	20.2	20.0	20.6	21.0
	4H	19.6	20.1	20.0	20.5	21.0	19.6	20.1	20.0	20.5	21.0
	6H	19.5	20.1	20.0	20.4	20.8	19.5	20.1	20.0	20.4	20.8
	8H	19.5	20.0	20.0	20.4	20.7	19.5	20.0	20.0	20.4	20.7
	12H	19.5	19.9	20.0	20.3	20.7	19.5	19.9	20.0	20.3	20.7
8H	4H	19.5	20.0	20.0	20.3	20.7	19.5	20.0	20.0	20.3	20.7
	6H	19.5	19.8	20.0	20.3	20.8	19.5	19.8	20.0	20.3	20.8
	8H	19.5	19.8	20.0	20.3	20.9	19.5	19.8	20.0	20.3	20.9
	12H	19.5	19.7	20.1	20.2	20.8	19.5	19.7	20.1	20.2	20.8
12H	4H	19.4	19.8	19.9	20.2	20.7	19.4	19.8	19.9	20.2	20.7
	6H	19.5	19.8	20.0	20.3	20.9	19.5	19.8	20.0	20.3	20.9
	8H	19.5	19.7	20.1	20.2	20.8	19.5	19.7	20.1	20.2	20.8
Variation of the observer position for the luminaire distance S											
S = 1.0H		3.5 / -4.9					3.5 / -4.9				
S = 1.5H		5.9 / -6.2					5.9 / -6.2				
S = 2.0H		7.8 / -6.7					7.8 / -6.7				
Standard table		n/a					n/a				
Correction summand		n/a					n/a				
Corrected glare indices referring to 1130 lm total luminous flux											